

FPG: 790



## BIB OVERALL

**FABRIC:** 65/35 Polycotton & 100% Cotton

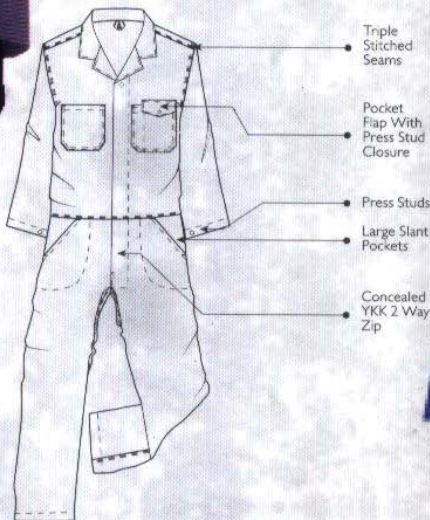
**WEIGHT:** 230 gm<sup>2</sup>

**SIZES:** S M L XL 2XL 3XL 4XL 5XL

**COLOURS:**

All colours made to orders ( MOQ \_\_\_\_\_ )

Elasticated braces / Chest pocket with flap and concealed snap fastening and 2 pen pockets / Adjustable waist with buttons / Fly with concealed zip / 2 front pockets with self-closing flaps / 2 back pockets with self-closing flaps / Leg pocket with flap and concealed snap fastening and 2 pen pockets and mobile pocket with velcro fastening / Folding rule pocket



FPG: 791

## BOILERSUIT

**FABRIC:** 65/35 Polycotton & 100% Cotton

**WEIGHT:** 230 gm<sup>2</sup>

**SIZES:** S M L XL 2XL 3XL 4XL 5XL

**COLOURS:**

All colours made to orders ( MOQ \_\_\_\_\_ )

Chest pocket with press stud closure and pen division / Concealed two-way Zip front / Adjustable cuff with press stud closure / Back pocket / Ruler pocket on leg / Triple needle stitching on all seams

# FATIMA PAK GROUP

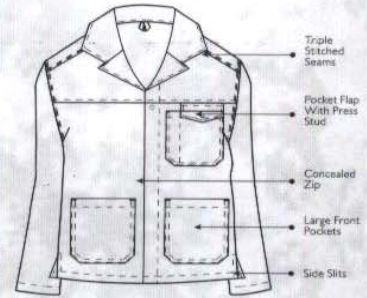


FPG: 792

## 100% COTTON WORK JACKET

**FABRIC:** 100% Cotton  
**WEIGHT:** 240 gm<sup>2</sup>  
**SIZES:** XS S M L XL 2XL 3XL 4XL 5XL  
**COLOURS:** Navy, Royal  
 All colours made to orders (MOQ \_\_\_\_\_)

Triple needle stitching for extra strength / Chest pocket with press stud closure and pen division / Large front pockets for convenient storage / Concealed Zip / Side slits for ease of movement / Bar tacks on stress points



## CARGO WORK TROUSERS

Constructed from a 100% cotton twill and given a rugged, industrial wash, these cargo trousers are made to be worn both in and out of the office. Be it behind a desk or on site, our cargo trousers will keep you cool and comfortable while remaining stylish and modern.



FPG: 793

Belt Loops

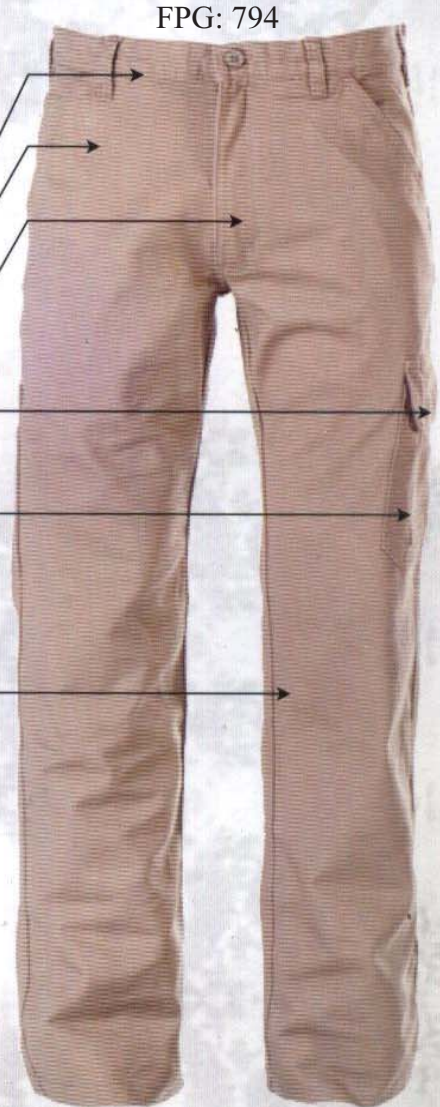
Coin Pocket

Zip

Large Functional Cargo Pockets With Velcro Closure

Cellphone Pocket

Triple Stitching On All Seams

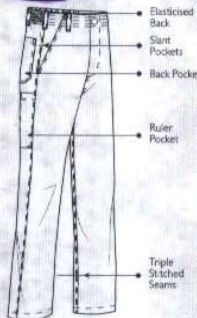


FPG: 794

## 100% COTTON WORK TROUSERS

**FABRIC:** 100% Cotton  
**WEIGHT:** 240 gm<sup>2</sup>  
**SIZES:** 28 30 32 34 36 38 40 42 44 46 48 50 52 54  
**COLOURS:** Navy, Royal  
 All colours made to orders (MOQ \_\_\_\_\_)

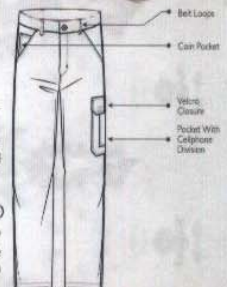
Triple needle stitching for extra strength / Half elasticised waistband for comfort / Ruler pocket / Concealed YKK Zip / Bar tacks on stress points for extra strength



## CARGO WORK TROUSERS

**FABRIC:** 65/35 Polycotton & 100% Cotton  
**WEIGHT:** 310 gm<sup>2</sup>  
**SIZES:** 28 30 32 34 36 38 40 42 44 46 48 50 52 54  
**COLOURS:** Khaki, Fatigue, Navy  
 All colours made to orders (MOQ \_\_\_\_\_)

Cargo pocket with cellphone division and Velcro closure / Ruler pocket / 2 back pockets / Coin pocket / Triple needle stitching on all seams for extra strength / Bar tacks on stress points / Concealed YKK zip / Industrial wash



# FATIMA PAK GROUP

## LAB COAT

FPG: 795

**FABRIC:** 65/35 Polycotton Twill

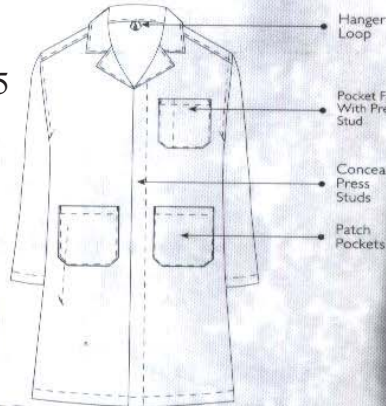
**WEIGHT:** 230 gm<sup>2</sup>

**SIZES:** S M L XL 2XL 3XL 4XL 5XL

**COLOURS:** Royal, White, Red, Navy, Grey, Khaki, Emerald, Black

All colours made to orders (MOQ \_\_\_\_\_)

Extra length garment with back vent / Two large front pockets / Chest pocket with press stud closure and pen division / Concealed press stud front / Bar tacks on stress points for extra strength



## MEN'S LONG SLEEVE CHAMBRAY SHIRT

**FABRIC:** 80/20 Oxford Cotton Rich Blend

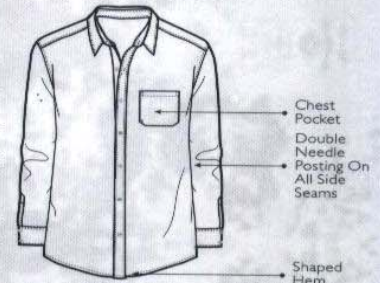
**WEIGHT:** 115 gm<sup>2</sup>

**SIZES:** S M L XL 2XL 3XL 4XL 5XL

**COLOURS:** White, Blue

All colours made to orders (MOQ \_\_\_\_\_)

Double back pleats / Button down front / Built in collar stays / Chest pocket / Top stitching on yoke, shoulder and armholes for added strength / Posted side seams / Formal cuff and gauntlet with button closures / Bar tacks on stress points



## CARGO WORK SHORTS

FPG: 796

**FABRIC:** 65/35 Polycotton & 100% Cotton

**WEIGHT:** 310 gm<sup>2</sup>

**SIZES:** 28 30 32 34 36 38 40 42 44 46 48 50 52 54

**COLOURS:** Navy

All colours made to orders (MOQ \_\_\_\_\_)

Cargo pocket with cellphone division and Velcro closure / Ruler pocket / 2 back pockets / Coin pocket / Triple needle stitching on all seams for extra strength / Bar tacks on stress points / Concealed zip / Industrial wash



## HOODIE

**FABRIC:** 100% Cotton

**WEIGHT:** 260 gm<sup>2</sup>

**SIZES:** XS S M L XL 2XL 3XL 4XL

**COLOURS:** Red, Navy, Black, Bottle, Fatigue

All colours made to orders (MOQ \_\_\_\_\_)

Brushed Fleece / Black inner hood / Rib cuffs and welts / Black eyelets / Adjustable self-colour drawcord /



FATIMA PAK GROUP  
P.O.BOX.406 SIALKOT PAKISTAN  
www.fatimapak.com

E.MAIL fatima@fatimapak.com  
TEL: 0092 52 4//4583717/4583791  
FAX NUMBER: 0092 52 4583791  
Mob.0092 300 612 6050

# FATIMA PAK GROUP

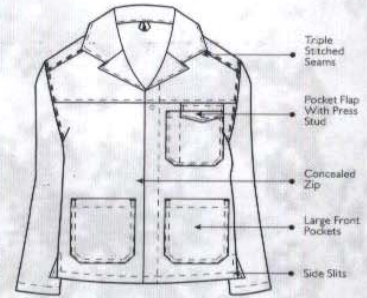


FPG: 792

## 100% COTTON WORK JACKET

**FABRIC:** 100% Cotton  
**WEIGHT:** 240 gm<sup>2</sup>  
**SIZES:** XS S M L XL 2XL 3XL 4XL 5XL  
**COLOURS:** Navy, Royal  
 All colours made to orders (MOQ \_\_\_\_\_)

Triple needle stitching for extra strength / Chest pocket with press stud closure and pen division / Large front pockets for convenient storage / Concealed Zip / Side slits for ease of movement / Bar tacks on stress points



## CARGO WORK TROUSERS

Constructed from a 100% cotton twill and given a rugged, industrial wash, these cargo trousers are made to be worn both in and out of the office. Be it behind a desk or on site, our cargo trousers will keep you cool and comfortable while remaining stylish and modern.



FPG: 793

Belt Loops

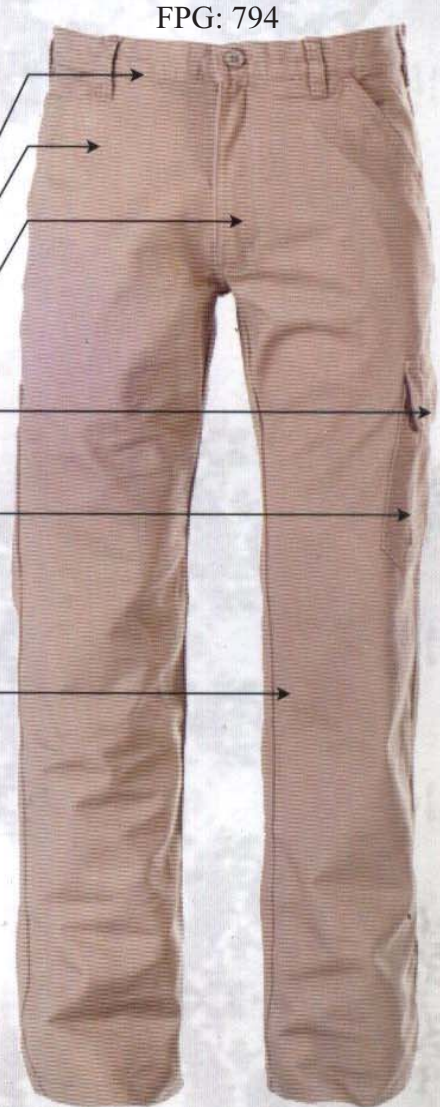
Coin Pocket

Zip

Large Functional Cargo Pockets With Velcro Closure

Cellphone Pocket

Triple Stitching On All Seams

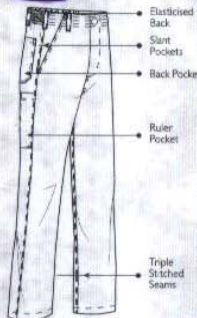


FPG: 794

## 100% COTTON WORK TROUSERS

**FABRIC:** 100% Cotton  
**WEIGHT:** 240 gm<sup>2</sup>  
**SIZES:** 28 30 32 34 36 38 40 42 44 46 48 50 52 54  
**COLOURS:** Navy, Royal  
 All colours made to orders (MOQ \_\_\_\_\_)

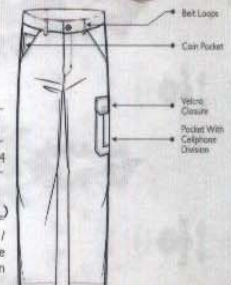
Triple needle stitching for extra strength / Half elasticised waistband for comfort / Ruler pocket / Concealed YKK Zip / Bar tacks on stress points for extra strength



## CARGO WORK TROUSERS

**FABRIC:** 65/35 Polycotton & 100% Cotton  
**WEIGHT:** 310 gm<sup>2</sup>  
**SIZES:** 28 30 32 34 36 38 40 42 44 46 48 50 52 54  
**COLOURS:** Khaki, Fatigue, Navy  
 All colours made to orders (MOQ \_\_\_\_\_)

Cargo pocket with cellphone division and Velcro closure / Ruler pocket / 2 back pockets / Coin pocket / Triple needle stitching on all seams for extra strength / Bar tacks on stress points / Concealed YKK zip / Industrial wash



# FATIMA PAK GROUP

## LAB COAT

FPG: 795

**FABRIC:** 65/35 Polycotton Twill

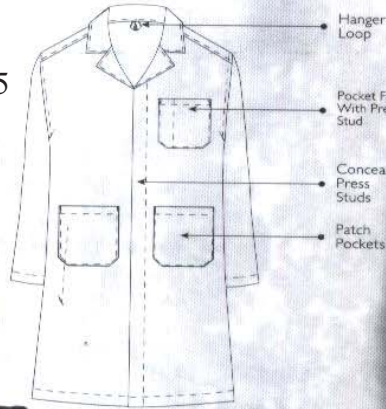
**WEIGHT:** 230 gm<sup>2</sup>

**SIZES:** S M L XL 2XL 3XL 4XL 5XL

**COLOURS:** Royal, White, Red, Navy, Grey, Khaki, Emerald, Black

All colours made to orders (MOQ \_\_\_\_\_)

Extra length garment with back vent / Two large front pockets / Chest pocket with press stud closure and pen division / Concealed press stud front / Bar tacks on stress points for extra strength



## MEN'S LONG SLEEVE CHAMBRAY SHIRT

**FABRIC:** 80/20 Oxford Cotton Rich Blend

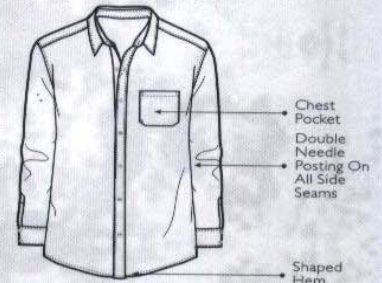
**WEIGHT:** 115 gm<sup>2</sup>

**SIZES:** S M L XL 2XL 3XL 4XL 5XL

**COLOURS:** White, Blue

All colours made to orders (MOQ \_\_\_\_\_)

Double back pleats / Button down front / Built in collar stays / Chest pocket / Top stitching on yoke, shoulder and armholes for added strength / Posted side seams / Formal cuff and gauntlet with button closures / Bar tacks on stress points



## CARGO WORK SHORTS

FPG: 796

**FABRIC:** 65/35 Polycotton & 100% Cotton

**WEIGHT:** 310 gm<sup>2</sup>

**SIZES:** 28 30 32 34 36 38 40 42 44 46 48 50 52 54

**COLOURS:** Navy

All colours made to orders (MOQ \_\_\_\_\_)

Cargo pocket with cellphone division and Velcro closure / Ruler pocket / 2 back pockets / Coin pocket / Triple needle stitching on all seams for extra strength / Bar tacks on stress points / Concealed zip / Industrial wash



## HOODIE

**FABRIC:** 100% Cotton

**WEIGHT:** 260 gm<sup>2</sup>

**SIZES:** XS S M L XL 2XL 3XL 4XL

**COLOURS:** Red, Navy, Black, Bottle, Fatigue

All colours made to orders (MOQ \_\_\_\_\_)

Brushed Fleece / Black inner hood / Rib cuffs and welts / Black eyelets / Adjustable self-colour drawcord /



FATIMA PAK GROUP  
P.O.BOX.406 SIALKOT PAKISTAN  
www.fatimapak.com

E.MAIL fatima@fatimapak.com  
TEL: 0092 52 4//4583717/4583791  
FAX NUMBER: 0092 52 4583791  
Mob.0092 300 612 6050

# FATIMA PAK GROUP



FPG: 797

## LONG SLEEVE CHEF JACKET

**FABRIC:** 65/35 Polycotton Twill

**WEIGHT:** 230 gm<sup>2</sup>

**SIZES:** S M L XL 2XL 3XL 4XL 5XL

**COLOURS:** White, Black

Double breasted unisex jacket / Relaxed fit with shaped cuff / Chest pocket with pen division / Reinforced stress points on cuff for extra strength



FPG: 799

## CHEF APRON

**FABRIC:** 65/35 Polycotton Twill

**WEIGHT:** 230 gm<sup>2</sup>

**SIZES:** Standard

**COLOURS:** White, Black

Adjustable neck strap / Bar tacks on all stress points / Large Front pocket



FPG: 798

## CHEF TROUSER

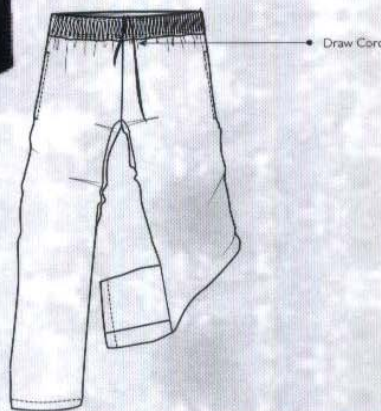
**FABRIC:** 65/35 Polycotton Twill

**WEIGHT:** 230 gm<sup>2</sup>

**SIZES:** S M L XL 2XL 3XL 4XL 5XL

**COLOURS:** Check, Black

Relaxed fit with fully elasticised wide waistband and draw cord / Two side entry pockets and one back pocket



FPG: 800

## CHEF CAP

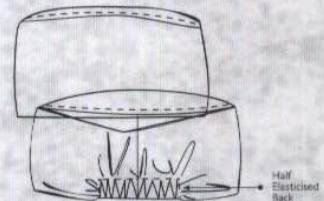
**FABRIC:** 65/35 Polycotton Twill

**WEIGHT:** 230 gm<sup>2</sup>

**SIZES:** Standard

**COLOURS:** White, Black, Check

Elasticised back



**FATIMA PAK GROUP**  
**P.O.BOX.406 SIALKOT PAKISTAN**  
**www.fatimapak.com**

**E.MAIL fatima@fatimapak.com**  
**TEL: 0092 52 4//4583717/4583791**  
**FAX NUMBER: 0092 52 4583791**  
**Mob.0092 300 612 6050**

# FATIMA PAK GROUP



FPG: 800-01



FPG: 800-02



FPG: 800-03



FPG: 800-04



FPG: 800-05



FPG: 800-06



FPG: 800-07



FPG: 800-08



FPG: 800-09



FPG: 800-10



FPG: 800-11



FPG: 800-12



FPG: 800-13



FPG: 800-14



FPG: 800-15



FPG: 800-16

# FATIMA PAK GROUP



FPG: 797

## LONG SLEEVE CHEF JACKET

**FABRIC:** 65/35 Polycotton Twill

**WEIGHT:** 230 gm<sup>2</sup>

**SIZES:** S M L XL 2XL 3XL 4XL 5XL

**COLOURS:** White, Black

Double breasted unisex jacket / Relaxed fit with shaped cuff / Chest pocket with pen division / Reinforced stress points on cuff for extra strength



FPG: 799

## CHEF APRON

**FABRIC:** 65/35 Polycotton Twill

**WEIGHT:** 230 gm<sup>2</sup>

**SIZES:** Standard

**COLOURS:** White, Black

Adjustable neck strap / Bar tacks on all stress points / Large Front pocket



FPG: 798

## CHEF TROUSER

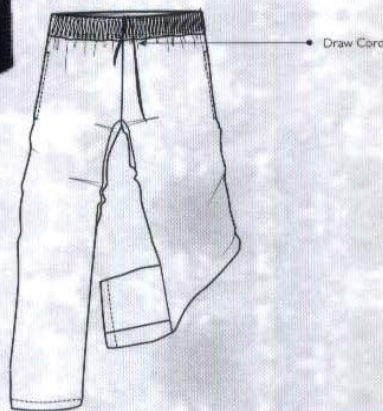
**FABRIC:** 65/35 Polycotton Twill

**WEIGHT:** 230 gm<sup>2</sup>

**SIZES:** S M L XL 2XL 3XL 4XL 5XL

**COLOURS:** Check, Black

Relaxed fit with fully elasticised wide waistband and draw cord / Two side entry pockets and one back pocket



FPG: 800

## CHEF CAP

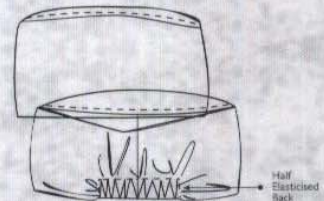
**FABRIC:** 65/35 Polycotton Twill

**WEIGHT:** 230 gm<sup>2</sup>

**SIZES:** Standard

**COLOURS:** White, Black, Check

Elasticised back



**FATIMA PAK GROUP**  
**P.O.BOX.406 SIALKOT PAKISTAN**  
**www.fatimapak.com**

**E.MAIL fatima@fatimapak.com**  
**TEL: 0092 52 4//4583717/4583791**  
**FAX NUMBER: 0092 52 4583791**  
**Mob.0092 300 612 6050**



# FATIMA PAK GROUP



FPG: 800-01



FPG: 800-02



FPG: 800-03



FPG: 800-04



FPG: 800-05



FPG: 800-06



FPG: 800-07



FPG: 800-08



FPG: 800-09



FPG: 800-10



FPG: 800-11



FPG: 800-12



FPG: 800-13



FPG: 800-14



FPG: 800-15



FPG: 800-16